

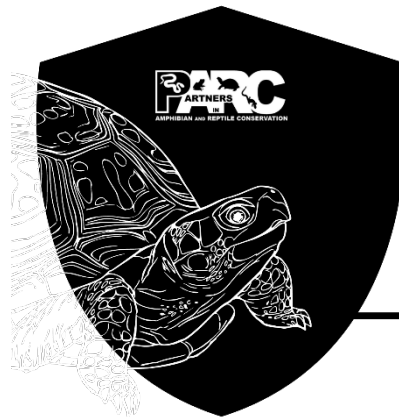
Confiscation & Repatriation WG tools to support LE confiscations & turtle conservation

JULIE SLACUM

CO-CHAIR CCITT
CONFISCATION AND
REPATRIATION WG

MIDWEST ILLEGAL TRADE
WORKSHOP

FEBRUARY 15, 2024



CCITT

COLLABORATIVE TO COMBAT
THE ILLEGAL TRADE IN TURTLES



Goal

- Build housing capacity & secure dedicated resources for care to enable LE to confiscate and deter illegal trade and possession
- Provide tools and resources to help support health and welfare and maximize conservation value



Tools & Resources

- Survey of states to better understand concerns and needs associated with repatriation for different species

Decision tools document informs:

- Decision-making associated with the outcome of confiscated turtles once a case has been closed
- 8 case studies: looked at factors that contributed to release or non-release
- Decision tree and key

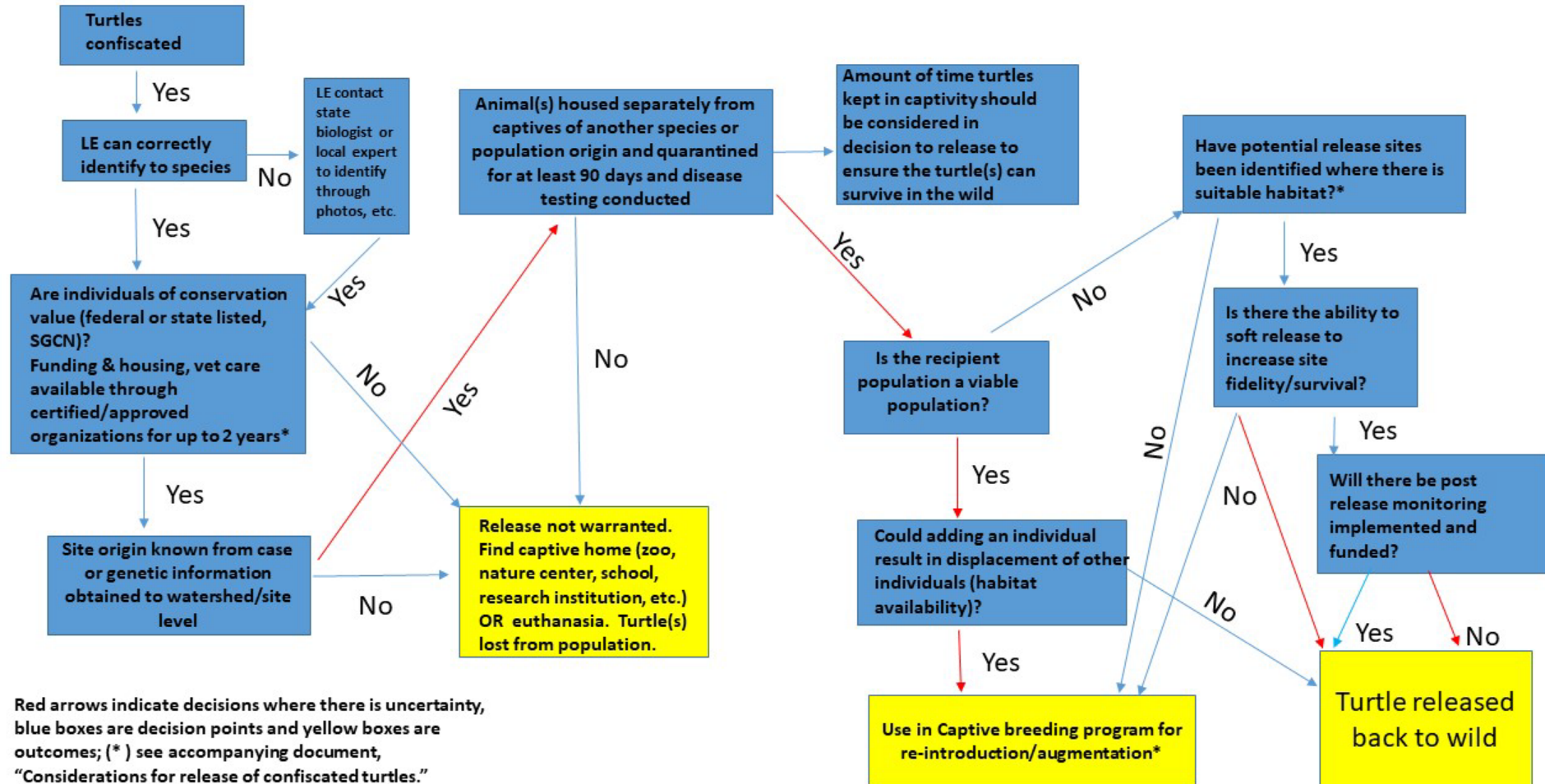
Factors Influencing Repatriation

- Information on how long held, held with other species/taxa, origin?
- Strict quarantine and biosecurity protocols followed during holding?
- Disease screening conducted?
- Genetic testing conducted, if origin unknown?
- Recipient sites
 - occupied sites; risk of displacement of native individuals, local adaptation, behavioral changes? Baseline disease information?
 - extirpated site; address threats, habitat needs
 - Soft releases and post release monitoring



Decision tree

Draft Decision tree for potential outcomes for confiscated turtles



Time 0 protocols

- Guides actions taken at time of confiscation until longer term holding occurs
- To help facilitate release back to the wild
- Includes:
 - Biosecurity measures
 - Initial Health Screening
 - Temporary housing
 - Supportive Care
 - Transportation

1

Confiscation

Actions

Maintain chain of custody, provide supportive care, conduct coarse health screening, separate into groups for transport to quarantine and long-term housing.

1 to 3 days

Needs

OLE wildlife inspectors
Veterinarians
State biologists
Coordinator

AZA SAFE Health & Welfare Protocols

- Housing, Husbandry & Biosecurity measures (up to 3 weeks)
- Initial & Comprehensive Health Assessments
- Decision tree for release
- Euthanasia considerations
- Standardized forms



Guidance Document for Developing an Agency Confiscation Plan

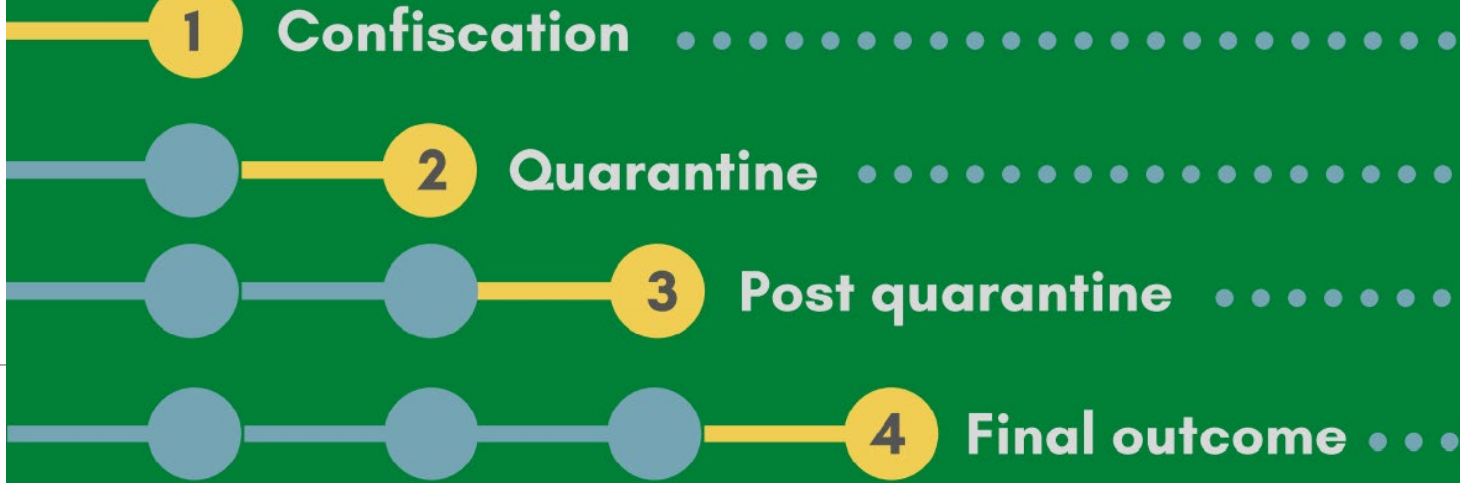
Purpose: Define roles & make recommendations for response to a turtle seizure, confiscation, or surrender.

Inform the process needed for a state to receive turtles from another state after genetic and disease testing has been conducted.

Goals: Provide agencies information & tools to respond to a confiscation that provides humane treatment, minimizes risk of disease, & maximizes conservation value (e.g., release back to the wild)

Elevate the issue to leadership about decisions associated with confiscations, & the need for long-term resources to maximize conservation outcomes (equipment, quarantine housing, genetic testing, disease screening).

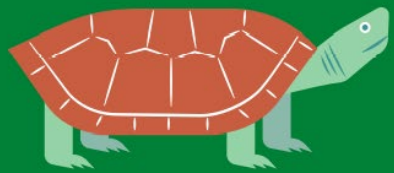




Actions

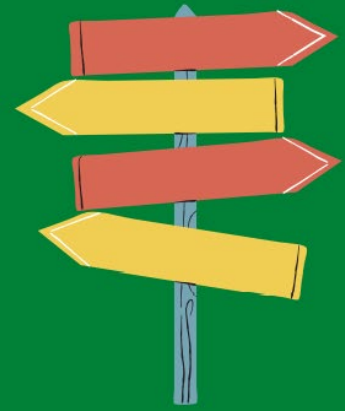
Risk assessment to determine final disposition for each individual turtle:


1. Repatriation
2. Captive breeding to support reintroductions
3. OLE undercover work
4. Donate to educational or research institution
5. Euthanasia



Needs

- State biologists
- Veterinarian
- Partner organizations & institutions
- Coordinator





Elements of the Plan

I. Roles & Responsibilities:

- Leadership Role
- Decision making role
- LE Role
- Biologist Role
- Communication Lead

II. Actions taken at the time of seizure, surrender: Help with ID, Chain of Custody Needs, Triage (care), and temporary holding

III. Initial Health Assessment & Preparation for Transport to Holding Facility

IV. Identification of facilities for care, determining costs, testing, what information they will collect and maintain for LE and the biologist

V. Directory of species experts

VI. Considerations for Repatriation or Permanent Placement- identifying recipient sites, educational and research facilities for placement

Moving forward



- Assess housing needs to inform capacity by looking at past needs and an annual survey
- Assist LE with placement of confiscated animals
- Maintain and expand network of housing facilities
- Continue placement of 150 spotted turtles based on genetic assignment
- Work with AZA veterinarians to develop comprehensive disease screening guidance to determine release suitability
- Develop a process for getting accurate and rapid genetic assignments